

SPM-033

Image



Key Features

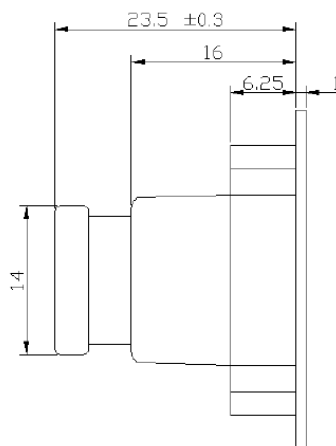
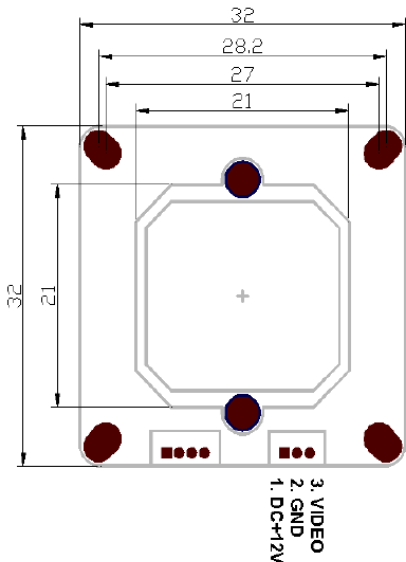
- 1/3" CMOS Sensor
- NTSC, 656 X 492
- PAL, 768 X 576
- DC12V
- 32mm x 32mm

Ordering Number

- SPM-033N : NTSC
- SPM-033P : PAL

Dimensions

Unit : mm



Technical Specifications

	NTSC	PAL
VIDEO		
Imaging Device	1/3 Inch CMOS Sensor	
Signal System	NTSC	PAL
Effective Pixels Number	656(H) x 492(V)	768(H) x 576(V)
Scanning System	2:1 Interlace	
Sync System	Internal	
Scanning Frequency	15.734KHz(H)/59.94Hz(V)	15.625KHz(H)/50Hz(V)
Horizontal Resolution	480TV Lines	600TV Lines
Min. Illumination	12 V / lux-sec	
S/N Ratio	More than 38dB (AGC OFF)	
Video output	CVBS : 1.0Vp-p / 75Ω Composite	
OPERATIONAL		
Shutter Type	Electronic Rolling Shutter	
Brightness	Auto	
AGC(Auto Gain Control)	Auto	
Backlight Compensation	On	
White Balance	AWC	
D-Effect	Off / Mirror / Rotate / V-Flip (Option)	
ENVIRONMENTAL		
Operating Temperature	-10°C ~ +50°C (+14°F ~ +122°F)	
Operating Humidity	Less than 80% RH	
ELECTRICAL		
Input Voltage	DC12V ±10%	
Power Consumption	Max. 0.5W	
MECHANICAL		
Dimensions	32 x 32 x t 1.0mm	
Weight	T.B.D	